

01

Report on COP10 ITOCHU Exhibited at Interactive Fair for Biodiversity

The 10th Conference of the Parties to the Convention on Biological Diversity (COP10) was held in Nagoya, Aichi Prefecture from October 18 to 29, 2010. Over 8,000 delegates from more than 190 countries and regions attended the conference to discuss how to achieve the targets of the convention. ITOCHU Corporation participated in the Interactive Fair for Biodiversity that was held in conjunction with the conference. The fair featured exhibits from over 200 local and national governments, international organizations, NGOs, NPOs, and private enterprises, introducing participants' initiatives for

biodiversity. ITOCHU introduced specific business activities that take biodiversity into consideration, as well as the tropical rainforest regeneration program that ITOCHU supports as part of its contribution to society. The exhibit was viewed with interest by many visitors. Going forward, ITOCHU Corporation will continue to promote environmentally friendly business activities and social contribution activities both within and outside the Group, with the goal of fulfilling the ITOCHU mission "Committed to the Global Good" in terms of biodiversity.



Contact

CSR Promotion & Global Environment
Department, General Affairs Division
Shoichi Suzuki
Tel: 03-3497-7245 (Country code: 81)



02

Bust of ITOCHU's Second President Takenosuke Itoh Deposited with His Hometown of Wakasa Town

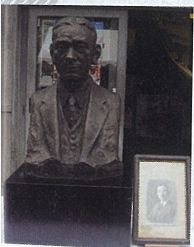
Recently, ITOCHU deposited a bust of its second president, Takenosuke Itoh, with the Wakasa Saba Kaido Kumagawa-Juku Shiryokan (archives museum) in his hometown of Wakasa Town, Fukui Prefecture. The deposit was made in recognition of the connection between ITOCHU and Wakasa. A ceremony to unveil

the bust, which had been kept at ITOCHU's headquarters, was held on October 3 and was attended by Chairman Eizo Kobayashi.

Takenosuke Itoh was born as the second son of Kanbei Henmi, the first chief of Kumagawa Village. After studying at Shiga Commercial Senior High School, he joined Itoh Honten (in Osaka), the predecessor to ITOCHU Corporation. His immense talents were eventually recognized by Chubei Itoh II, ITOCHU's first president, and after joining the Itoh family by marriage, he was appointed the company's second president. More than half a century later, another Wakasa Town native, Chairman Kobayashi, became the company's ninth president. Life truly is full of interesting coincidences. During his student days at Osaka University, Chairman Kobayashi, studied under Professor Tsunekichi Itoh, who was the second son of Takenosuke Itoh. Although he was on a science path, he chose ITOCHU when the professor recommended he try a trading company. It's almost as if an unseen hand was at work behind the scenes.

Contact

Osaka General Affairs Department
Masunaga
Tel: 06-6241-3120
(Country code: 81)



03

Three ITOCHU Group Companies Donate Recycled Wheelchairs to Thailand

ITOCHU Corporation supports a program run by the non-profit organization (NPO) Wheelchairs of Hope to send recycled wheelchairs to Thailand. This NPO enlists the help of volunteers to fix up used wheelchairs so they are as good as new and donates them to disabled people in Asian countries.

Recently, 110 wheelchairs and 34 spare parts were shipped in a container to Thailand. The wheelchairs arrived at their destination in good condition in September and were warmly appreciated. ITOCHU Corporation and ITC NETWORKS CORPORATION share transportation costs to Thailand, while ITOCHU LOGISTICS CORP. helps out as much as possible in its area of expertise by lowering container transportation costs.

Employees of ITOCHU LOGISTICS CORP. and Wheelchairs of Hope work together to pack the containers. The three Group companies and employee volunteers worked together making the container of wheelchairs a successful social contribution to enrich the lives of the recipients in Thailand, allowing them to now be an active part of their communities.

Contact

CSR Promotion & Global Environment
Department, General Affairs Division
Shoichi Suzuki
Tel: 03-3497-7245 (Country code: 81)



A Thai adult and child in their new wheelchairs